

Technical

Bulletin M207010

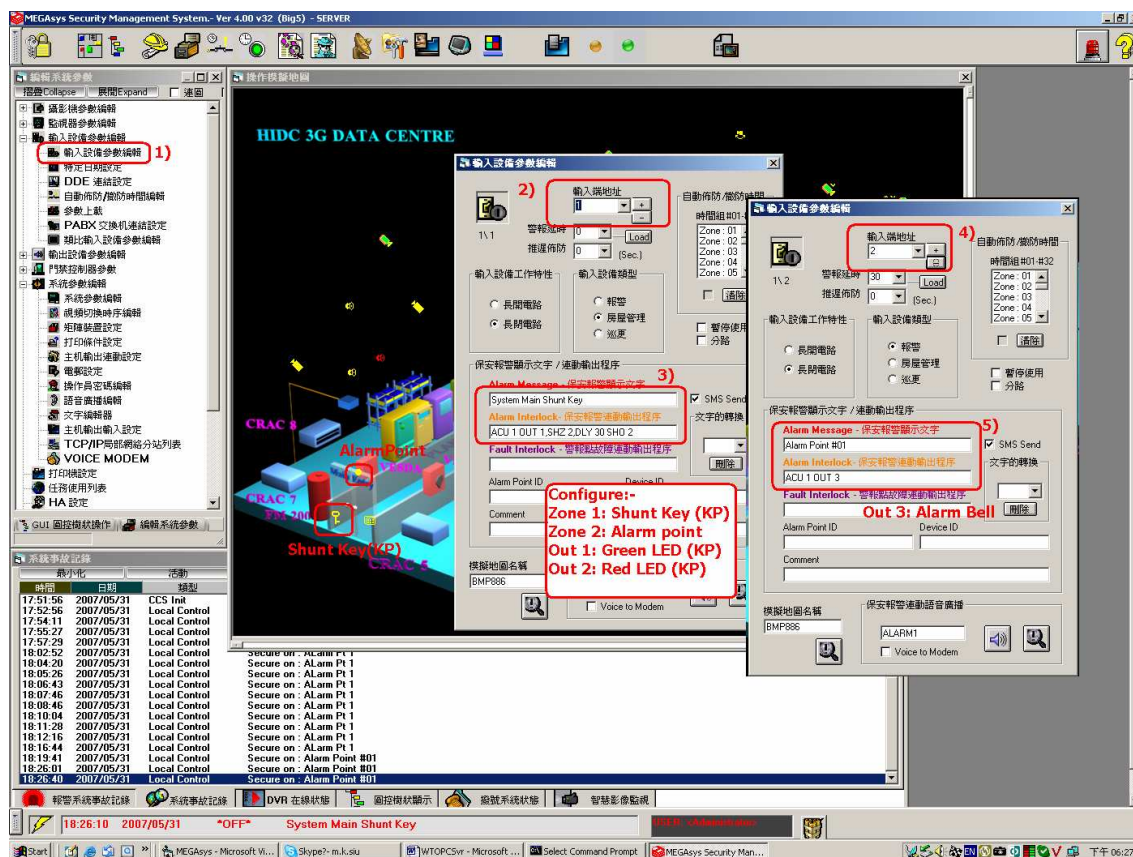
**MEGAsys Alarm Shunting/Delay Control
Technical Notes**

TN-207020110

v1.0

2007/05/31
Evertch Electronics Ltd.

Alarm Setup for Alarm Delay and Shunting Delay for Exit Route:



Ex:

Set Alarm Point, Keypad Control (include LED indicator)

- Input Zone:**
- 1 Shunt Key (Normal Close)
 - 2 Alarm Point (Door Contact)

- Out Zone:**
- 1 Keypad Green LED
 - 2 Keypad Red LED
 - 3 S.A.Alarm Bell

Step #1 Set Macro for Keypad function: input Zone 1

Make the key as a control point, green LED for system into access mode, red LED for secure mode.
 When control key turn to green LED “on”, means system going in to access, alarm suspending.
 In red LED mode, means system in secure mode, system ready for alarm. When key change from green to red, system will delay 30 seconds from access mode to secure mode.

Macro : (3)

ACU 001 OUT 001
 SHZ 002
 DLY 30 SHO 002

set output zone 1 on, green LED on.
 Zone 2 shunting, and zone 2 red LED Off.
 Delay 30 seconds, shunt off zone 2,

And red LED on.

Step #2 **Set Alarm Delay 30 Second.**
 Set this alarm delay on 30 seconds, after 30 seconds for alarm sound. (4)

Step #3 **Set alarm output fire zone 3 output as (5)**

