

**Technical**

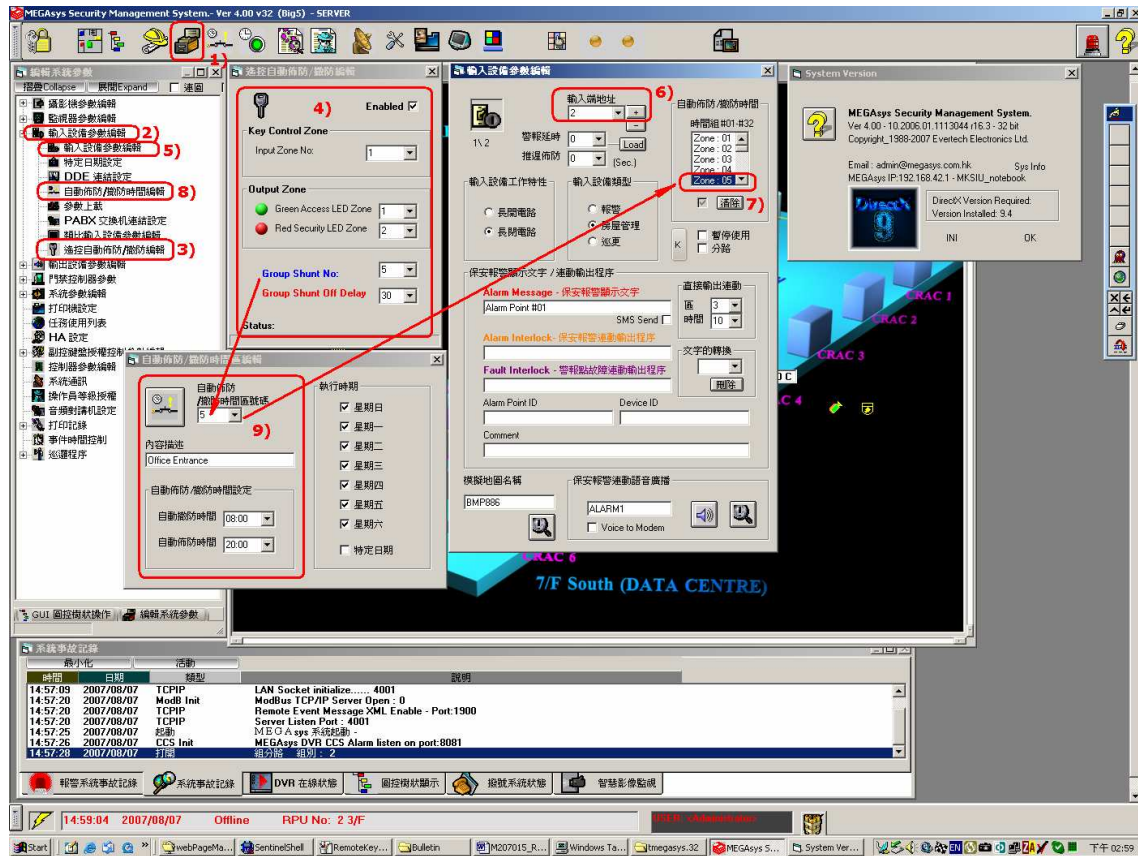
**Bulletin M207015**

**MEGAsys**  
**Remote Alarm Shunting/Delay Control**  
**Technical Notes**  
TN-207020115  
**v1.0**

For MEGAsys V16.3 or above

2007/08/07  
Evertch Electronics Ltd.

**Alarm Setup for Alarm Delay and Shunting Delay for Exit Route:**



Ex:

**Set Alarm Point, Remote Keypad Control (include LED indicator)**

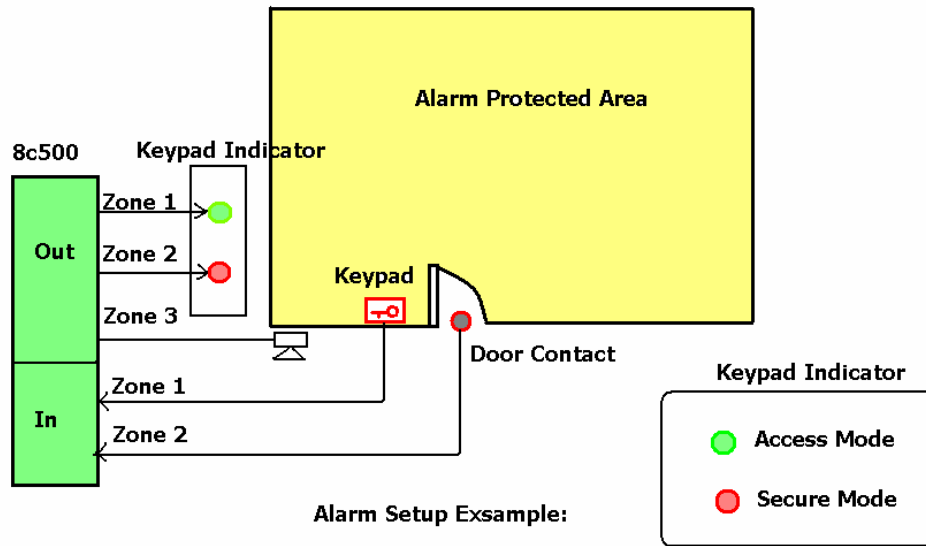
**Input Zone:** 1 Shunt Key (Normal Close)  
2 Alarm Point (Door Contact)

**Out Zone:** 1 Keypad Green LED  
2 Keypad Red LED  
3 S.A. Alarm Bell

**Auto GS 5 Timer 08:00 a.m. to 08:00 p.m.**

**Step #1 Remote Key Control Panel Setup**

- 1) System Parameter Setup
- 2) Alarm Input Parameter Setup
- 3) Remote Shunting Panel Setup
- 4) Key Remote Panel Define
  - Input the Key control zone #1
  - Output Green/Red LED Define (#1, #2)
  - Define a Shunt Group #5
  - Setup exit route delay to 30 Second



Alarm Setup Exsample:

Step #2

- 5) Input Parameter Setup
  - 6) Define alarm zone #2 for alarm sensor (zone #2)
  - 7) Setup zone #2 in Group Shunt #5, means the alarm zone will follow the shunting group #5
- Can add more alarm zone to Group Shunt #5 for external zone shunting

Step #3

- 8) Setup the Shunt/Secure Parameter
- 9) Set the Auto Shunting timer from 08:00 to 20:00 (access mode)

Completed!

