





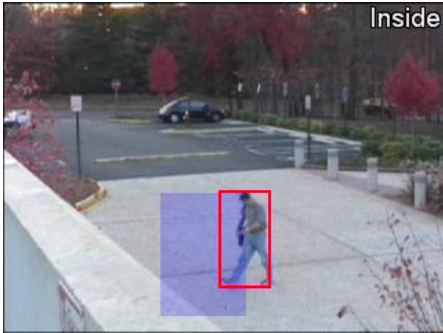



Snapshot Markup Quick Reference Card

This card provides example snapshots of events displayed in the Alert Console and FAST™ (the Forensics Analysis Scenario Tool™). The events described on this card may not be supported by every sensor.

An event is an activity of interest that occurs within a surveillance camera's field of view. Both ObjectVideo VEW and ObjectVideo OnBoard can be set up to instantly display alerts on the Alert Console or send alerts by e-mail when events occur. When ObjectVideo Forensics is used to detect events that occurred in the past, the event occurrences are displayed in FAST. Each alert and event occurrence has at least one snapshot. A snapshot is a digital picture of an event.

Snapshot markup refers to the shapes and text placed on snapshots to provide more information about the event. There is different snapshot markup for each type of event. Event markup can appear as highlighted areas of interest, the text that appears in the right corner of the snapshot, tripwires and the arrows that represent their direction, and the arrows that represent the movement of objects in a particular direction.

Example Snapshot	Description	Example Snapshot	Description
	Appeared in Full View An event in which an object moves into the camera's field of view for the first time. An object appeared the first time it moved into the camera's field of view.		Appeared in Partial View An event in which an object appeared in an area of interest without appearing within the camera's field of view previously. The blue polygon represents the area of interest, and the snapshot is marked with the Appeared message.
	Disappeared from Full View An event in which an object disappeared from anywhere within the camera's field of view. In this example, a person has disappeared by walking out of the hallway.		Disappeared from Partial View An event in which an object is no longer in the camera's field of view, having last been detected within an area of interest. The blue polygon represents the area of interest, and the snapshot is marked with the Disappeared message.
	Entered Partial View An event in which an object entered an area of interest from any direction within the camera's field of view. To trigger an alert the object must have already been detected within the camera's field of view before entering the area. The blue polygon represents the area of interest.		Exited Partial View An event in which an object exited an area of interest in any direction. The blue polygon represents the area of interest and the snapshot is marked with the Exited message. The blue arrow at the bottom of the red box shows you in which direction the object is moving.
	Inside Partial View An event in which an object appears in an area of interest or enters the perimeter of an area of interest. The blue polygon represents the area of interest and the snapshot is marked with the Inside message.		Left Behind in Full View An event in which an object is left behind anywhere within the camera's field of view. The snapshot is marked with the Inside message to indicate that something has been left inside the camera's field of view.

Snapshot Markup Quick Reference Card



Left Behind in Partial View

An event in which an object is left behind in an area of interest. The blue polygon represents the area of interest and the snapshot is marked to indicate that something has been inserted in the area of interest.



Loitering in Partial View

An event in which an object remains within an area of interest for a user-specified period of time. The blue polygon represents the area of interest and the snapshot is marked with the Loitering message.



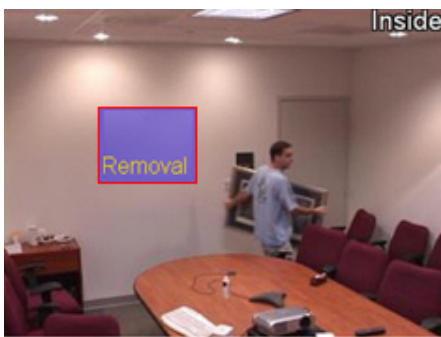
Scene Change

An event that changes a camera's field of view, such as a camera being moved from a known view, a camera zooming, a camera being turned off or unplugged, a camera being covered-up, or lights being turned on or off. Text on the snapshot describes the scene change that has occurred.



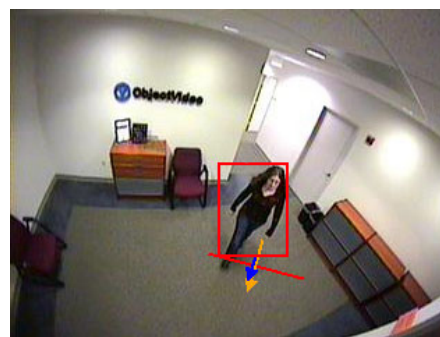
Taken Away from Full View

An event in which an object is taken away from anywhere within the camera's field of view. A Removal box shows the former location of the object that was taken away.



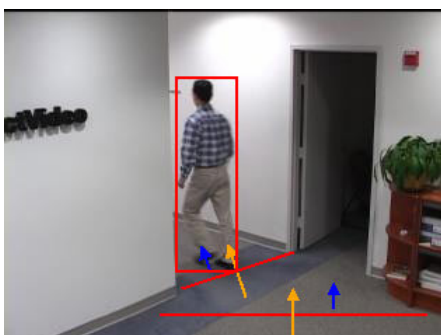
Taken Away from Partial View

An event in which an object is removed from an area of interest. A Removal box shows the former location of the object that was taken away.



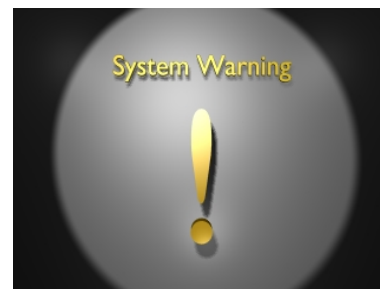
Tripwire

A tripwire is a line drawn within the camera's field of view. During a tripwire event, an object crosses the line. A tripwire appears as a red line on a snapshot. The blue arrow indicates the direction the object is moving. The yellow arrow indicates the direction an object has to move for an event to be detected.



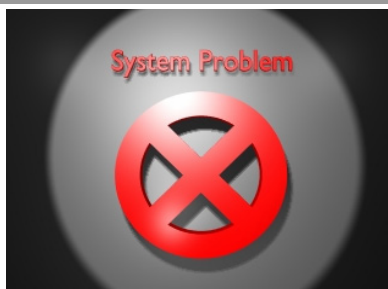
Multi-line Tripwire

An event in which an object crosses two lines (tripwires) drawn within the camera's field of view within a user-specified period of time. The tripwires appear as red lines. The blue arrows are the direction the object is moving. The yellow arrows are the direction an object has to move for an event to be detected.



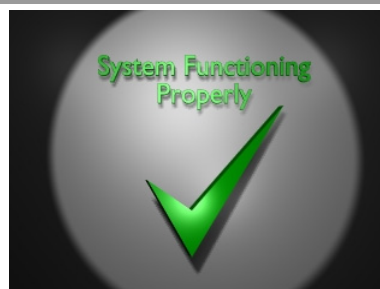
System Warning (Health Monitor Alert)

A System Warning health monitor alert notifies you of a condition in the system that may need attention. Read the **Message** area of the alert for specific information.



System Problem (Health Monitor Alert)

When the system is experiencing a problem, the System Problem snapshot appears.



System Functioning Properly (Health Monitor Alert)

When a system problem is corrected, the System Functioning Properly snapshot appears.